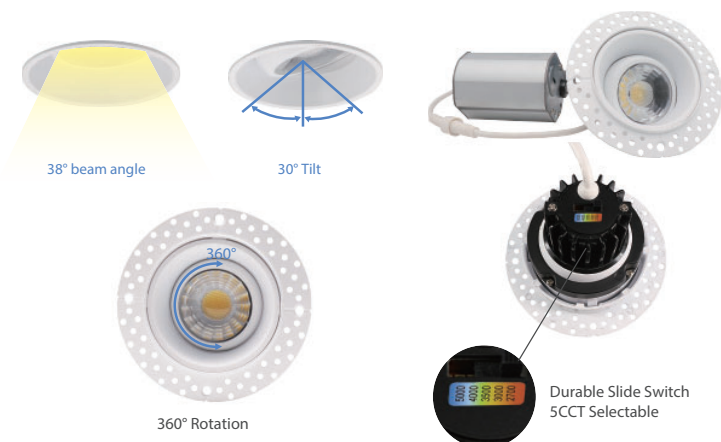


# Pre-Select 5 CCT 2" Trimless LED Gimbal

FDTLG-LED-2-8W-5CCT-WH  
SKU#101063

FDTLG-LED-2-8W-5CCT-BK  
SKU#101077



## Trim Finish Options

- BLACK
- WHITE

## Description

2" Trimless LED Gimbal, 8 watts, Pre-Select 5 CCT, Round

## Features

- \* Durable airtight aluminum body with adjustable gimbal
- \* Type IC, Air-Tight & Wet - No Housing Required
- \* Flangeless installation, provide a more high end looking
- \* No housing required, easy and fast installation
- \* 10%-100% dimming capability. This fixture is compatible with industry standard forward-phase / reverse-phase and TRIAC/ELV dimmers
- \* Rated for long life - over 50,000 hours

SPECIFICATIONS	
Model	FDTLG-LED-2-8W-5CCT-WH/BK
Watts	8W
CRI	80Ra+
Color Temperature(K)	Pre-Select 5 CCT 2700K/3000K/3500K/4000K/5000K
Light Output(lm)	600lm
Default Driver Input	AC120V, 60Hz
Dimming	Triac Dimming 10% - 100%
Power Factor	>0.92
Approved Location	Wet Location
Air Tight	Yes
Operating Temp.	(-4°F~104°F) -20~40°C
Beam Angle	38°

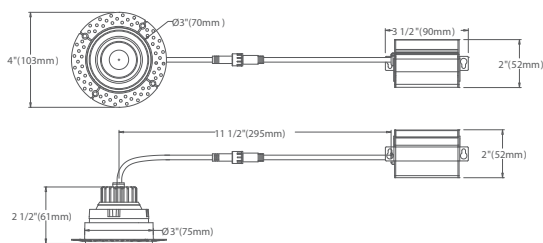
PACKAGE	
Weight.(g)	369g
Qty/CTN (pcs)	18 pcs/CTN
Box Dimension	360(L) x 325(W) x 235(H) mm
Gross Weight	8.3 kg/CTN

## INCLUDED IN BOX

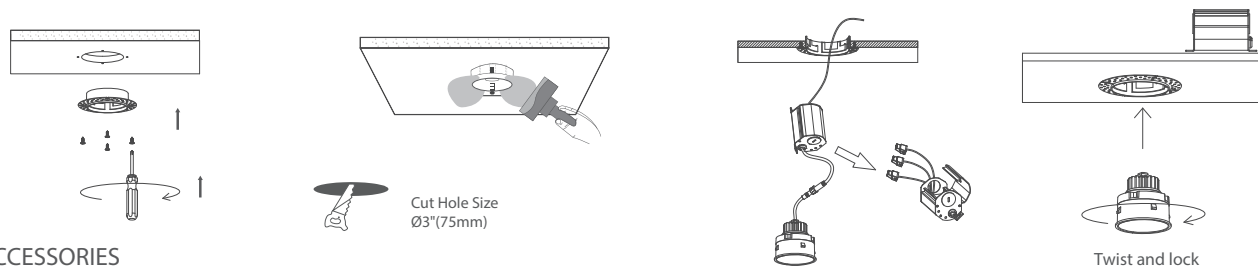
- 2" 8W Round Trimless LED Gimball with Driver
- 4 Screws



## DIMENSIONS



## INSTALLATION



## ACCESSORIES

### Mounting Plates



3" new construction  
pre-mounting plate  
opening Ø3" (78mm)



3 3/4" new  
construction pre-mounting plate  
opening Ø3" (75mm), Ø4-3/8" (110mm),  
Ø6-1/4" (160mm)

### Flexible Connector



4ft/ 6ft/ 10ft/ 20ft flexible connector