

# 2" Trimless LED Downlight



## Description

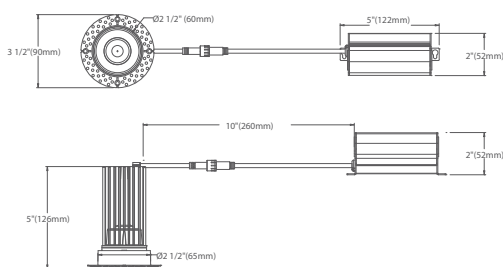
2" Trimless LED Downlight, 15watts, Round

## Features

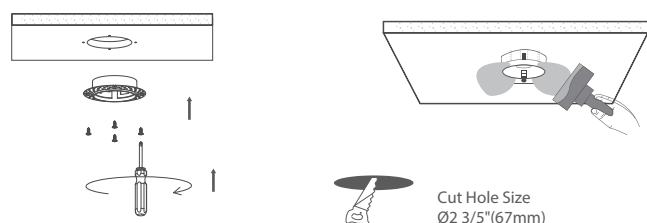
- \* Durable airtight aluminum body
- \* Type IC, Air-Tight & Wet - No Housing Required
- \* Flangeless installation, provide a more high end looking
- \* No housing required, easy and fast installation
- \* 10%-100% dimming capability. This fixture is compatible with industry standard forward-phase / reverse-phase and TRIAC/ELV dimmers
- \* Rated for long life - over 50,000 hours



## DIMENSIONS



## INSTALLATION

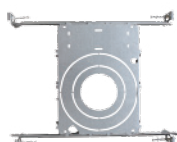


## ACCESSORIES

### Mounting Plates



3" new construction  
pre-mounting plate  
opening Ø2-7/8" (72mm)



2 2/3" x 3 5/4"  
new construction pre-mounting plate  
opening Ø2-1/8" (54mm), Ø2-7/8" (72mm),  
Ø3-3/4" (95mm), Ø5-1/4" (132mm)

### Flexible Connector



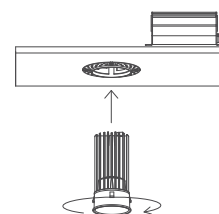
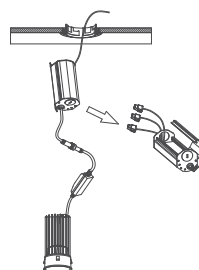
4ft/ 6ft/ 10ft/ 20ft flexible connector

SPECIFICATIONS	
Model	FDTL-LED-2-15W-5CCT-WH
Watts	15W
CRI	80Ra+
Color Temperature(K)	Pre-Select 5 CCT 2700K/3000K/3500K/4000K/5000K
Light Output(lm)	1000lm
Default Driver Input	AC120V, 60Hz
Dimming	Triac Dimming 10% - 100%
Power Factor	>0.99
Approved Location	Wet Location
Air Tight	Yes
Operating Temp.	(-4°F~104°F) -20~40°C
Beam Angle	38°

PACKAGE	
Weight(g)	511g
Qty/CTN (pcs)	18 pcs/CTN
Box Dimension	405(L) x 275(W) x 445(H) mm
Gross Weight	6.98 kg/CTN

## INCLUDED IN BOX

- 2" 15W Round LED Trimless Downlight with Driver
- 4 Screws



Twist and lock